

Scales and Rudiments

For Memorization

Arr. Zach Dobos

♩ = 100

The score is arranged in a grand staff format with the following parts from top to bottom:

- Flute:** Key of Concert C Major (left), Key of Concert F Major (right)
- Clarinet in B♭:** Concert C Major (D) (left), Concert F Major (G) (right)
- Alto Sax:** Concert C Major (A) (left), Concert F Major (D) (right)
- Tenor Sax:** Concert C Major (D) (left), Concert F Major (G) (right)
- Horn in F:** Concert C Major (G) (left), Concert F Major (C) (right)
- Trumpet in B♭:** Concert C Major (D) (left), Concert F Major (G) (right)
- Trombone:** Concert C Major (left), Concert F Major (right)
- Euphonium:** Concert C Major (left), Concert F Major (right)
- Tuba:** Concert C Major (left), Concert F Major (right)
- Xylophone:** Concert C Major (left), Concert F Major (right)
- Snare Drum:** Concert C Major Single Paradiddle (left), Concert F Major Double Paradiddle (right)

The score is in 4/4 time and consists of two systems. The first system covers measures 1-4, and the second system covers measures 5-8. The key signature changes from C Major to F Major between measures 4 and 5. The Snare Drum part includes rhythmic notation with accents and the following patterns:

Concert C Major Single Paradiddle: RLRRLRL

Concert F Major Double Paradiddle: RLRLRLRL LRL

Scales and Rudiments

2
7

Fl.
 B♭ Cl.
 A. Sx.
 T. Sx.

Key of Concert B♭ Major

Concert B♭ Major (C)

Concert B♭ Major (G)

Hn.
 B♭ Tpt.
 Tbn.
 Euph.
 Tuba

Concert B♭ Major (C)

Concert B♭ Major (F)

Concert B♭ Major (C)

Concert B♭ Major

Concert B♭ Major

Xyl.

Concert B♭ Major

S.Dr.
 L R L R IR L R L R

Concert B♭ Major
Flam Paradiddle

Scales and Rudiments

13

Fl. Key of Concert Eb Major

B♭ Cl. Concert Eb Major (F)

A. Sx. Concert Eb Major (C)

T. Sx. Concert Eb Major (F)

Hn. Concert Eb Major (Bb)

B♭ Tpt. Concert Eb Major (F)

Tbn. Concert Eb Major

Euph. Concert Eb Major

Tuba Concert Eb Major

Xyl. Concert Eb Major

S.Dr. Drag Paradiddle #1

13

Key of Concert Ab Major

Concert Ab Major (Bb)

Concert Ab Major (Eb)

Concert Ab Major (Bb)

Concert Ab Major

Concert Ab Major

Concert Ab Major

Concert Ab Major

Concert Ab Major Flam Accent

LLRLRRLRLL LLRLRR

L RLRLR LRL RL RLRL

Scales and Rudiments

19

Fl.

B \flat Cl.

A. Sx.

T. Sx.

Key of Concert D \flat Major

Concert D \flat Major (E \flat)

Concert D \flat Major (B \flat)

Hn.

B \flat Tpt.

Tbn.

Euph.

Tuba

Concert D \flat Major (E \flat)

Concert D \flat Major (A \flat)

Concert D \flat Major (E \flat)

Concert D \flat Major

Concert D \flat Major

Xyl.

Concert D \flat Major

S.Dr.

Concert D \flat Major

Swiss Army Triplet

L RRL RRL RR L RRL

Scales and Rudiments

25

Fl. Key of Concert Gb Major

B♭ Cl. Concert Gb Major (Ab)

A. Sx. Concert Gb Major (Eb)

T. Sx. Concert Gb Major (Ab)

Key of Concert B Major

Concert Cb/B Major (Db)

Concert Cb/B Major (Ab)

25

Hn. Concert Gb Major (Db)

B♭ Tpt. Concert Gb Major (Ab)

Tbn. Concert Gb Major

Euph. Concert Gb Major

Tuba Concert Gb Major

Xyl. Concert Gb Major

Concert Cb/B Major (F#)

Concert Cb/B Major (Db)

Concert B Major

Concert B Major

Concert B Major

25

S.Dr. Lesson 25 (Ratatap)

Rattamacue

LLRLRLRLR LLRLR

LLRLRRLRLR

Scales and Rudiments

6

31

Fl.

B \flat Cl.

A. Sx.

T. Sx.

Hn.

B \flat Tpt.

Tbn.

Euph.

Tuba

Xyl.

S.Dr.

Key of Concert E Major

Concert E Major (F#)

Concert E Major (Db)

Concert E Major (F#)

Concert E Major (B)

Concert E Major (F#)

Concert E Major

Concert E Major

Concert E Major

Concert E Major
Double Rattamacue

LLRLRLRRRL RRLRLR

Scales and Rudiments

37

Fl. Key of Concert A Major Key of Concert D Major

B♭ Cl. Concert A Major (B) Concert D Major (E)

A. Sx. Concert A Major (F#) Concert D Major (B)

T. Sx. Concert A Major (B) Concert D Major (E)

Hn. Concert A Major (E) Concert D Major (A)

B♭ Tpt. Concert A Major (B) Concert D Major (E)

Tbn. Concert A Major Concert D Major

Euph. Concert A Major Concert D Major

Tuba Concert A Major Concert D Major

Xyl. Concert A Major Concert D Major

S.Dr. 37
 Triple Rattamacue
 LILRLRLR LRL
 Five Stroke Roll
 RRLLR LLRRL

Scales and Rudiments

8

42

Fl.

B♭ Cl.

A. Sx.

T. Sx.

Key of Concert G Major

Concert G Major (A)

Concert G Major (E)

Hn.

B♭ Tpt.

Tbn.

Euph.

Tuba

Concert G Major (A)

Concert G Major (D)

Concert G Major (A)

Concert G Major

Concert G Major

Xyl.

Concert G Major

S.Dr.

Concert G Major
Seven Stroke Roll

RLLRRL LLRRL R

Scales and Rudiments

59

Fl.

B \flat Cl.

A. Sx.

T. Sx.

59

Hn.

B \flat Tpt.

Tbn.

Euph.

Tuba

59

Xyl.

59

S.Dr.

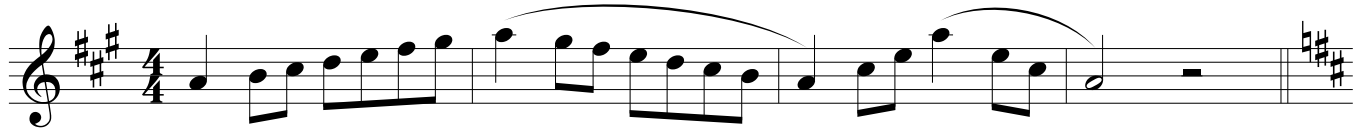
Alto Sax

Scales and Rudiments

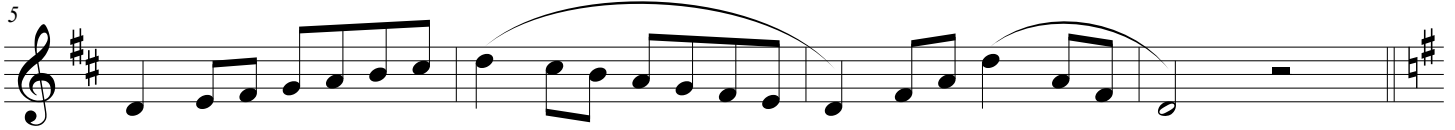
For Memorization

Arr. Zach Dobos

$\text{♩} = 100$



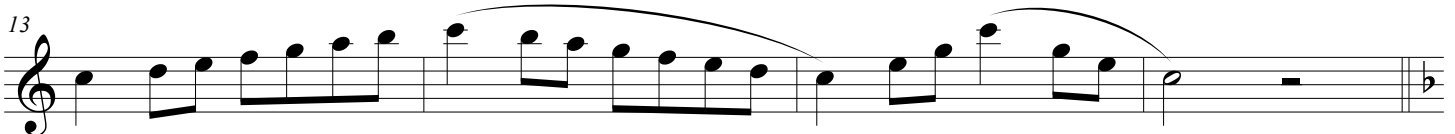
Concert C Major (A)



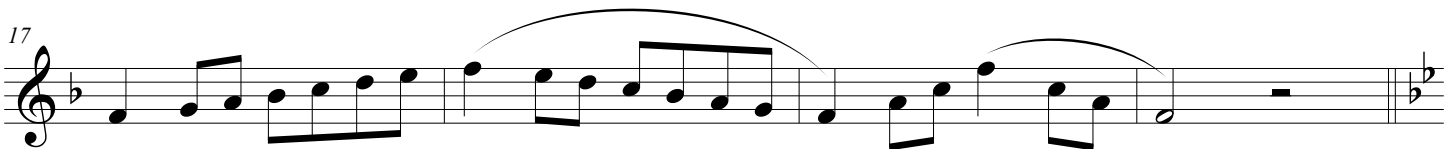
Concert F Major (D)



Concert Bb Major (G)



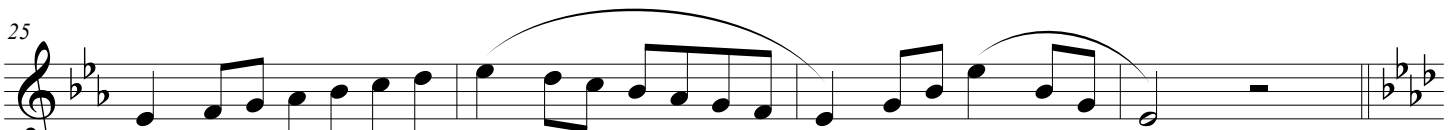
Concert Eb Major (C)



Concert Ab Major (F)



Concert Db Major (Bb)



Concert Gb Major (Eb)



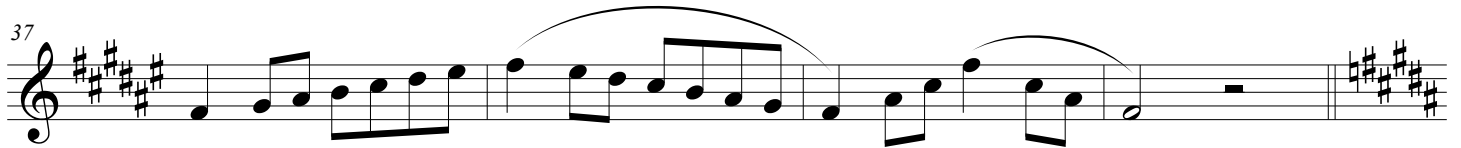
Concert Cb/B Major (Ab)

33



Concert E Major (Db)

37



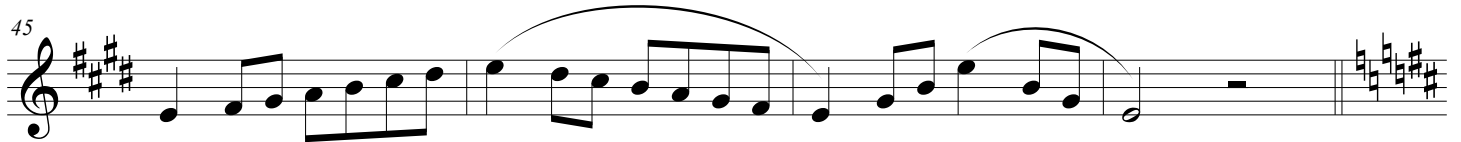
Concert A Major (F#)

41



Concert D Major (B)

45



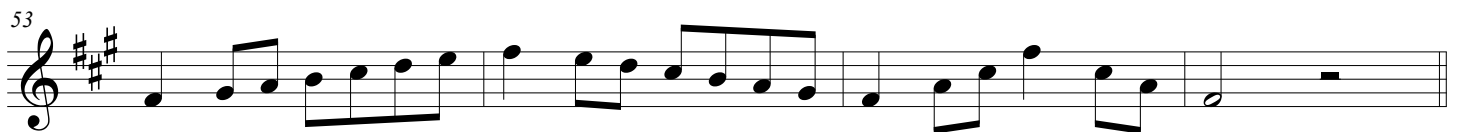
Concert G Major (E)

49



Concert d minor (b)

53



Concert a minor (F#)

57



Chromatic Scale

Scales and Rudiments

For Memorization

Arr. Zach Dobos

$\text{♩} = 100$

Musical notation for the first scale, Concert C Major (D). It is written on a treble clef staff with a key signature of two sharps (F# and C#) and a 4/4 time signature. The scale consists of quarter notes: D4, E4, F#4, G4, A4, B4, C5, B4, A4, G4, F#4, E4, D4. The first four notes are grouped with a slur, and the last four notes are also grouped with a slur.

Concert C Major (D)

5

Musical notation for the second scale, Concert F Major (G). It is written on a treble clef staff with a key signature of one sharp (F#) and a 4/4 time signature. The scale consists of quarter notes: G4, A4, B4, C5, B4, A4, G4, F#4, E4, D4, C4, B3, A3, G3. The last four notes are grouped with a slur.

Concert F Major (G)

9

Musical notation for the third scale, Concert B \flat Major (C). It is written on a treble clef staff with a key signature of one flat (B \flat) and a 4/4 time signature. The scale consists of quarter notes: C4, D4, E4, F4, G4, A4, B4, B \flat 4, A4, G4, F4, E4, D4, C4. The last four notes are grouped with a slur.

Concert B \flat Major (C)

13

Musical notation for the fourth scale, Concert E \flat Major (F). It is written on a treble clef staff with a key signature of two flats (B \flat and E \flat) and a 4/4 time signature. The scale consists of quarter notes: F4, G4, A4, B4, B \flat 4, A4, G4, F4, E \flat 4, D4, C4, B3, A3, G3. The last four notes are grouped with a slur.

Concert E \flat Major (F)

17

Musical notation for the fifth scale, Concert A \flat Major (B \flat). It is written on a treble clef staff with a key signature of three flats (B \flat , E \flat , and A \flat) and a 4/4 time signature. The scale consists of quarter notes: B \flat 4, C5, D5, E5, D5, C5, B \flat 4, A \flat 4, G4, F4, E4, D4, C4, B3. The last four notes are grouped with a slur.

Concert A \flat Major (B \flat)

21

Musical notation for the sixth scale, Concert D \flat Major (E \flat). It is written on a treble clef staff with a key signature of four flats (B \flat , E \flat , A \flat , and D \flat) and a 4/4 time signature. The scale consists of quarter notes: E \flat 4, F4, G4, A4, G4, F4, E \flat 4, D \flat 4, C4, B3, A3, G3, F3, E3. The last four notes are grouped with a slur.

Concert D \flat Major (E \flat)

25

Musical notation for the seventh scale, Concert G \flat Major (A \flat). It is written on a treble clef staff with a key signature of five flats (B \flat , E \flat , A \flat , D \flat , and G \flat) and a 4/4 time signature. The scale consists of quarter notes: A \flat 4, B \flat 4, C5, D5, C5, B \flat 4, A \flat 4, G \flat 4, F4, E4, D4, C4, B3, A3. The last four notes are grouped with a slur.

Concert G \flat Major (A \flat)

29

Musical notation for the eighth scale, Concert C \flat /B Major (D \flat). It is written on a treble clef staff with a key signature of five flats (B \flat , E \flat , A \flat , D \flat , and G \flat) and a 4/4 time signature. The scale consists of quarter notes: D \flat 4, E \flat 4, F4, G4, F4, E \flat 4, D \flat 4, C \flat 4, B3, A3, G3, F3, E3, D3. The last four notes are grouped with a slur.

Concert C \flat /B Major (D \flat)

33

Concert E Major (F#)

37

Concert A Major (B)

41

Concert D Major (E)

45

Concert G Major (A)

49

Concert d minor (e)

53

Concert a minor (b)

57

Chromatic Scale

Scales and Rudiments

For Memorization

Arr. Zach Dobos

♩ = 100

A musical staff in bass clef with a 4/4 time signature. It contains the first eight measures of the Concert C Major scale, starting with a quarter note C and ending with a quarter rest. The notes are C, D, E, F, G, A, B, and C.

Concert C Major

5

A musical staff in bass clef with a key signature of one flat (Bb). It contains the first eight measures of the Concert F Major scale, starting with a quarter note F and ending with a quarter rest. The notes are F, G, A, Bb, C, D, E, and F.

Concert F Major

9

A musical staff in bass clef with a key signature of two flats (Bb, Eb). It contains the first eight measures of the Concert Bb Major scale, starting with a quarter note Bb and ending with a quarter rest. The notes are Bb, C, D, Eb, F, G, A, and Bb.

Concert Bb Major

13

A musical staff in bass clef with a key signature of three flats (Bb, Eb, Ab). It contains the first eight measures of the Concert Eb Major scale, starting with a quarter note Eb and ending with a quarter rest. The notes are Eb, F, G, Ab, Bb, C, D, and Eb.

Concert Eb Major

17

A musical staff in bass clef with a key signature of four flats (Bb, Eb, Ab, Db). It contains the first eight measures of the Concert Ab Major scale, starting with a quarter note Ab and ending with a quarter rest. The notes are Ab, Bb, C, Db, Eb, F, G, and Ab.

Concert Ab Major

21

A musical staff in bass clef with a key signature of five flats (Bb, Eb, Ab, Db, Gb). It contains the first eight measures of the Concert Db Major scale, starting with a quarter note Db and ending with a quarter rest. The notes are Db, Eb, F, Gb, Ab, Bb, C, and Db.

Concert Db Major

25

A musical staff in bass clef with a key signature of six flats (Bb, Eb, Ab, Db, Gb, Cb). It contains the first eight measures of the Concert Gb Major scale, starting with a quarter note Gb and ending with a quarter rest. The notes are Gb, Ab, Bb, Cb, Db, Eb, F, and Gb. The final measure includes a chromatic scale: Gb, F, Eb, Db, Cb, Bb, Ab, Gb.

Concert Gb Major

29

A musical staff in bass clef with a key signature of two sharps (F#, C#). It contains the first eight measures of the Concert B Major scale, starting with a quarter note B and ending with a quarter rest. The notes are B, C, D, E, F#, G#, A, and B. The final measure includes a chromatic scale: B, C, D, E, F#, G#, A, B.

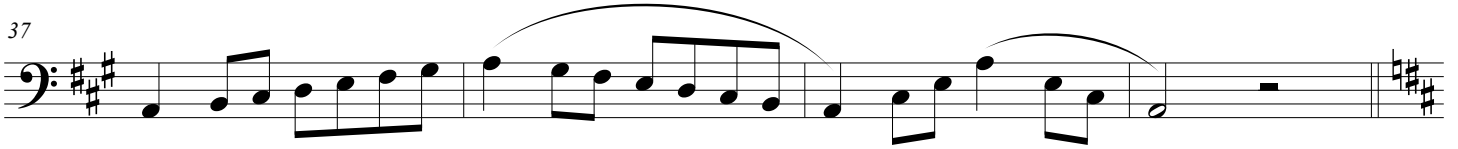
Concert B Major

33



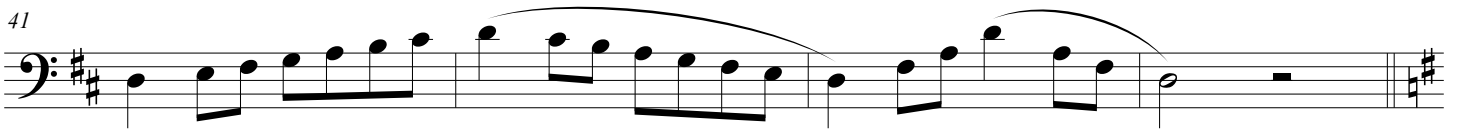
Concert E Major

37



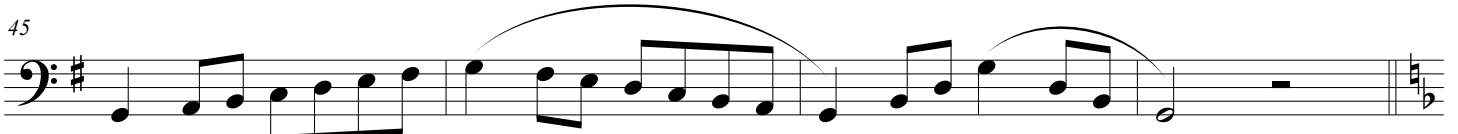
Concert A Major

41



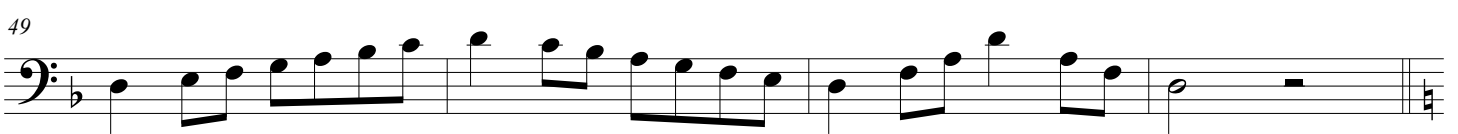
Concert D Major

45



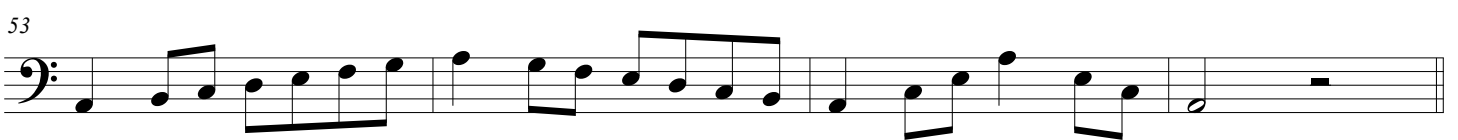
Concert G Major

49



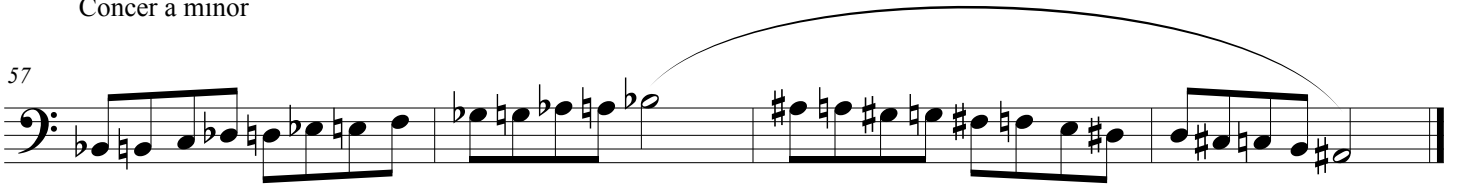
Concert d minor

53



Concer a minor

57



Chromatic Scale

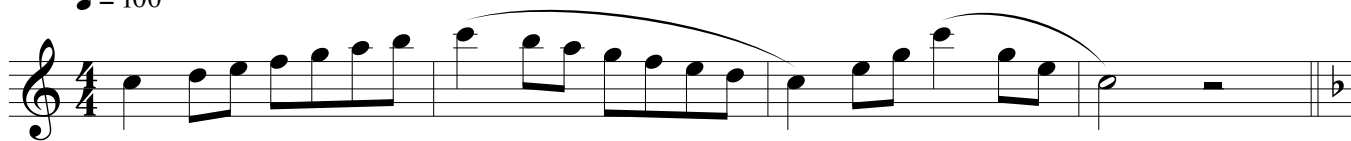
Flute

Scales and Rudiments

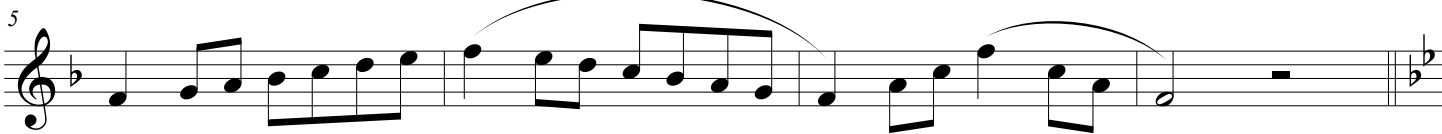
For Memorization

Arr. Zach Dobos

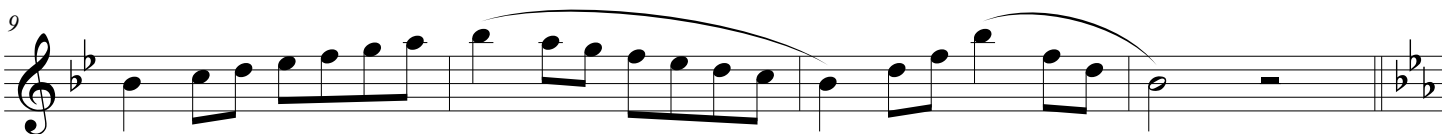
♩ = 100



Key of Concert C Major



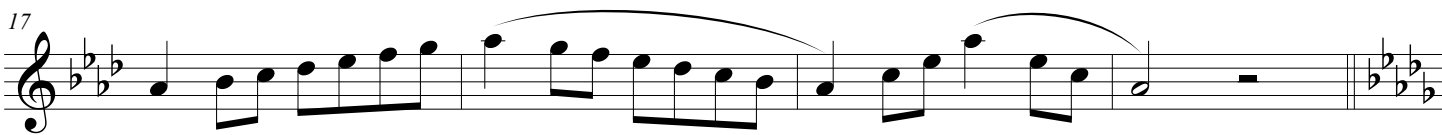
Key of Concert F Major



Key of Concert Bb Major



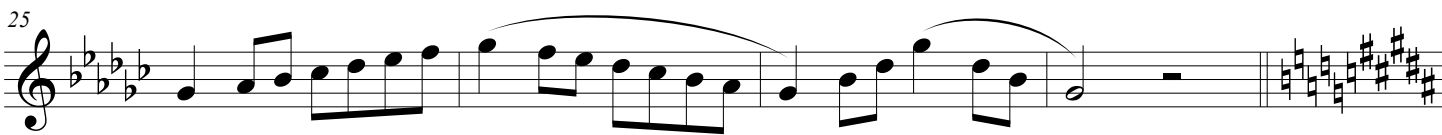
Key of Concert Eb Major



Key of Concert Ab Major



Key of Concert Db Major

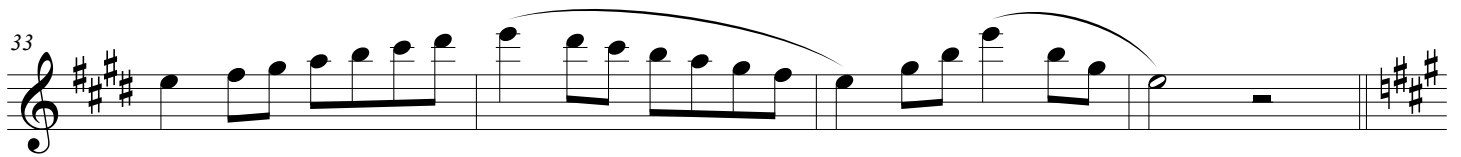


Key of Concert Gb Major



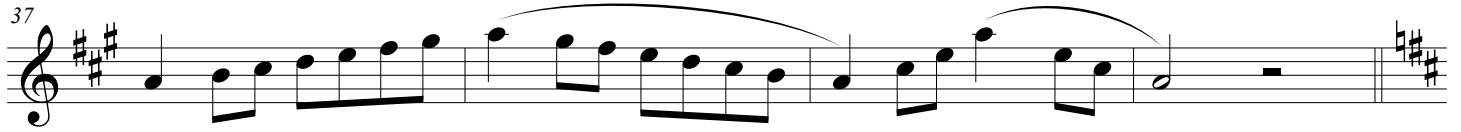
Key of Concert B Major

33



Key of Concert E Major

37



Key of Concert A Major

41



Key of Concert D Major

45



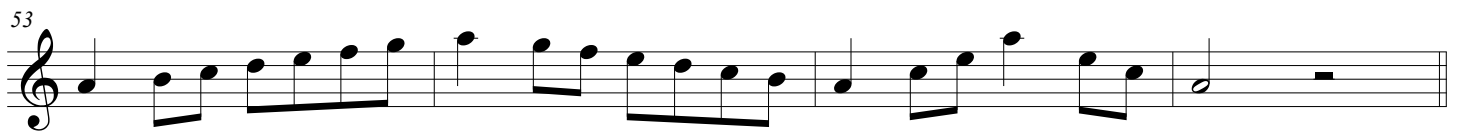
Key of Concert G Major

49



Key of Concert d minor

53



Key of Concert a minor

57



Chromatic Scale

Horn in F

Scales and Rudiments

For Memorization

Arr. Zach Dobos

♩ = 100

Concert C Major (G)

Musical notation for the first scale, Concert C Major (G), in 4/4 time. The scale starts on G4 and ends on G5. The notation includes a treble clef, a key signature of one sharp (F#), and a 4/4 time signature. The scale is written as a single line of music with a final double bar line.

Concert F Major (C)

Musical notation for the second scale, Concert F Major (C), in 4/4 time. The scale starts on C4 and ends on C5. The notation includes a treble clef, a key signature of one flat (Bb), and a 4/4 time signature. The scale is written as a single line of music with a final double bar line.

Concert Bb Major (F)

Musical notation for the third scale, Concert Bb Major (F), in 4/4 time. The scale starts on F3 and ends on F4. The notation includes a treble clef, a key signature of two flats (Bb, Eb), and a 4/4 time signature. The scale is written as a single line of music with a final double bar line.

Concert Eb Major (Bb)

Musical notation for the fourth scale, Concert Eb Major (Bb), in 4/4 time. The scale starts on Bb3 and ends on Bb4. The notation includes a treble clef, a key signature of three flats (Bb, Eb, Ab), and a 4/4 time signature. The scale is written as a single line of music with a final double bar line.

Concert Ab Major (Eb)

Musical notation for the fifth scale, Concert Ab Major (Eb), in 4/4 time. The scale starts on Ab3 and ends on Ab4. The notation includes a treble clef, a key signature of four flats (Bb, Eb, Ab, Db), and a 4/4 time signature. The scale is written as a single line of music with a final double bar line.

Concert Db Major (Ab)

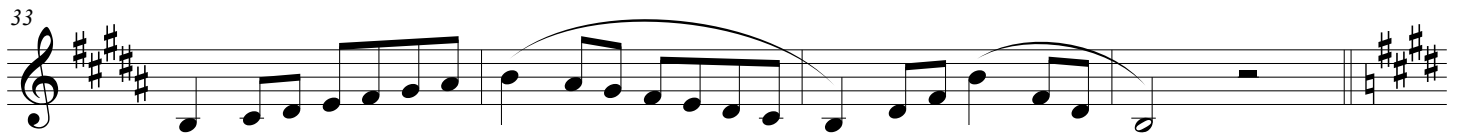
Musical notation for the sixth scale, Concert Db Major (Ab), in 4/4 time. The scale starts on Db3 and ends on Db4. The notation includes a treble clef, a key signature of five flats (Bb, Eb, Ab, Db, Gb), and a 4/4 time signature. The scale is written as a single line of music with a final double bar line.

Concert Gb Major (Db)

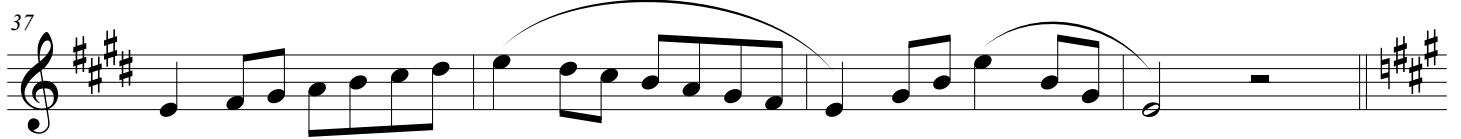
Musical notation for the seventh scale, Concert Gb Major (Db), in 4/4 time. The scale starts on Gb3 and ends on Gb4. The notation includes a treble clef, a key signature of six flats (Bb, Eb, Ab, Db, Gb, Cb), and a 4/4 time signature. The scale is written as a single line of music with a final double bar line.

Concert Cb/B Major (F#)

Musical notation for the eighth scale, Concert Cb/B Major (F#), in 4/4 time. The scale starts on Cb3 and ends on Cb4. The notation includes a treble clef, a key signature of seven flats (Bb, Eb, Ab, Db, Gb, Cb, Fb), and a 4/4 time signature. The scale is written as a single line of music with a final double bar line.



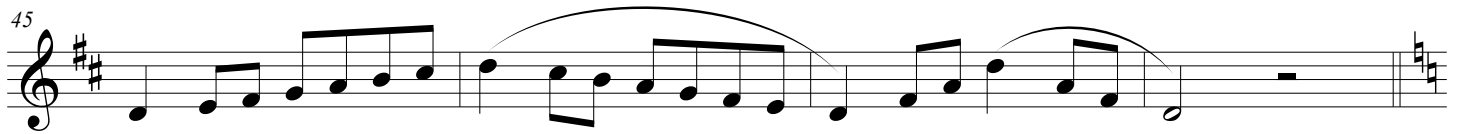
Concert E Major (B)



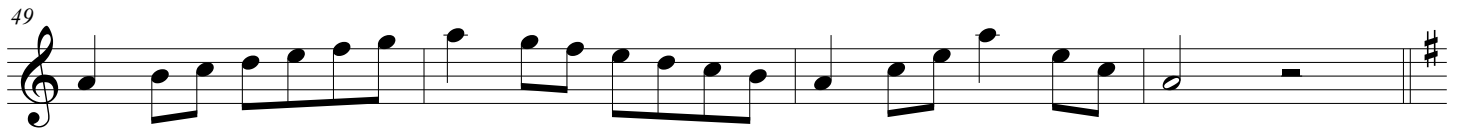
Concert A Major (E)



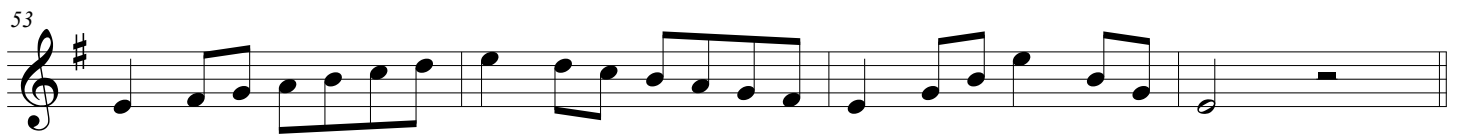
Concert D Major (A)



Concert G Major (D)



Concert d minor (a)



Concert a minor (e)



Chromatic Scale

Scales and Rudiments

For Memorization

Arr. Zach Dobos

$\text{♩} = 100$
Single Paradiddle

Musical notation for Single Paradiddle in 4/4 time. The notation consists of four measures of eighth notes on a single staff. The first measure contains four notes with accents, the second contains four notes with accents, the third contains four notes with accents, and the fourth contains four notes with accents. The rhythm is R L R R L R L L.

R L R R L R L L

5 Double Paradiddle

Musical notation for Double Paradiddle in 4/4 time. The notation consists of four measures of eighth notes on a single staff. The first measure contains four notes with accents, the second contains four notes with accents, the third contains four notes with accents, and the fourth contains four notes with accents. The rhythm is R L R L R R L R.

R L R L R R L R

9 Flam Paradiddle

Musical notation for Flam Paradiddle in 4/4 time. The notation consists of four measures of eighth notes on a single staff. The first measure contains four notes with accents, the second contains four notes with accents, the third contains four notes with accents, and the fourth contains four notes with accents. The rhythm is L R L R L R L R.

L R L R L R L R

13 Drag Paradiddle #1

Musical notation for Drag Paradiddle #1 in 4/4 time. The notation consists of four measures of eighth notes on a single staff. The first measure contains four notes with accents, the second contains four notes with accents, the third contains four notes with accents, and the fourth contains four notes with accents. The rhythm is LLR L R RRL R L L LLR L R R.

LLR L R RRL R L L LLR L R R

17 Flam Accent

Musical notation for Flam Accent in 4/4 time. The notation consists of four measures of eighth notes on a single staff. The first measure contains four notes with accents, the second contains four notes with accents, the third contains four notes with accents, and the fourth contains four notes with accents. The rhythm is L R L RRL R LLR L RRL R L.

L R L RRL R LLR L RRL R L

21 Swiss Army Triplet

Musical notation for Swiss Army Triplet in 4/4 time. The notation consists of four measures of eighth notes on a single staff. The first measure contains four notes with accents, the second contains four notes with accents, the third contains four notes with accents, and the fourth contains four notes with accents. The rhythm is L R R LLR R LLR R LLR R L.

L R R LLR R LLR R LLR R L

25 Lesson 25 (Ratatap)

Musical notation for Lesson 25 (Ratatap) in 4/4 time. The notation consists of four measures of eighth notes on a single staff. The first measure contains four notes with accents, the second contains four notes with accents, the third contains four notes with accents, and the fourth contains four notes with accents. The rhythm is LLR L R LLR L R LLR L R.

LLR L R LLR L R LLR L R

29 Rattamacue

Musical notation for Rattamacue in 4/4 time. The notation consists of four measures of eighth notes on a single staff. The first measure contains four notes with accents, the second contains four notes with accents, the third contains four notes with accents, and the fourth contains four notes with accents. The rhythm is LLR L R L RRL R L R.

LLR L R L RRL R L R

33 Double Rattamacue

LLR LLR L R L RRL RRL R L R _____

37 Triple Rattamacue

LILR LLR LLR L R L _____

41 Five Stroke Roll

R R L L R L L R R L _____

45 Seven Stroke Roll

R R L L R R L L L R R L L R _____

49 Nine Stroke Roll

R R L L R R L L R L L R R L L R R L _____ L

53 Ten Stroke Roll

L L R R L L R R L L R R L L R R L L R R L L R R _____

57 Thirteen Stroke Roll

R R L L R R L L R R L L R R L L R R L L R R L L R R L L R R _____

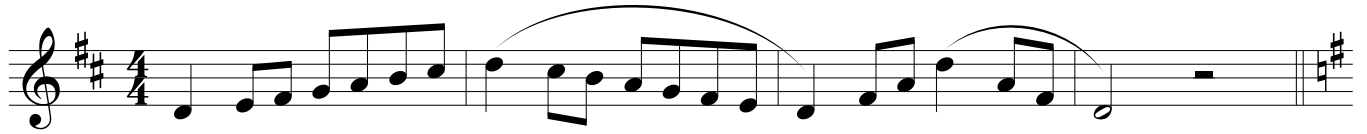
Tenor Sax

Scales and Rudiments

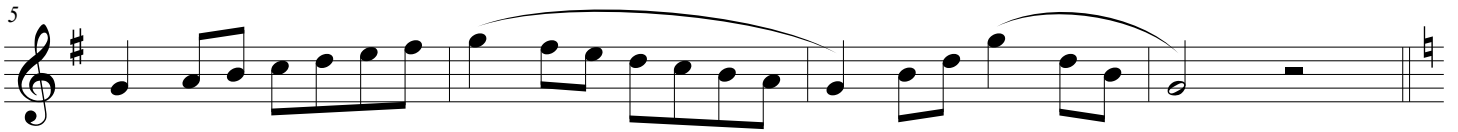
For Memorization

Arr. Zach Dobos

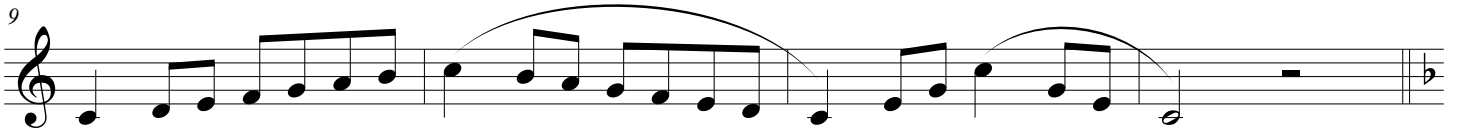
♩ = 100



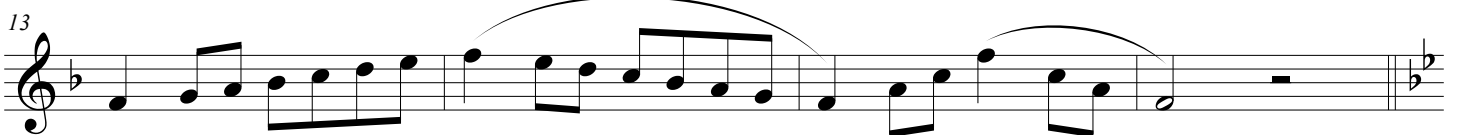
Concert C Major (D)



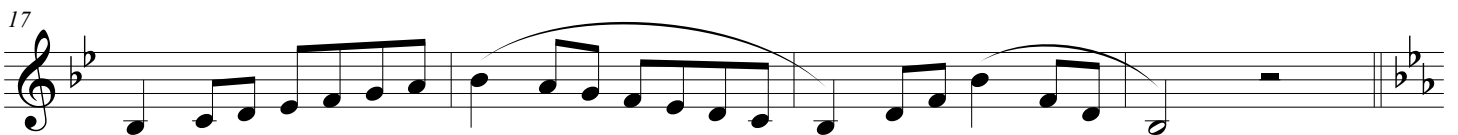
Concert F Major (G)



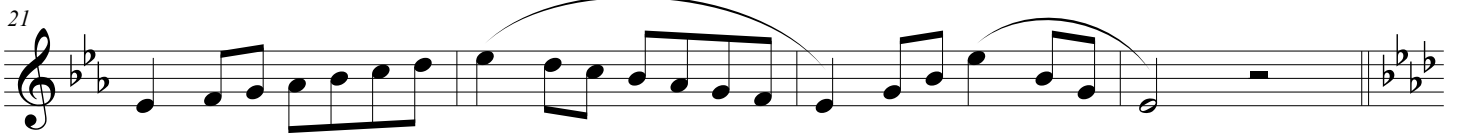
Concert Bb Major (C)



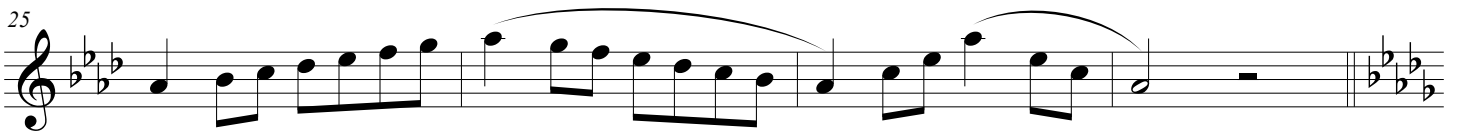
Concert Eb Major (F)



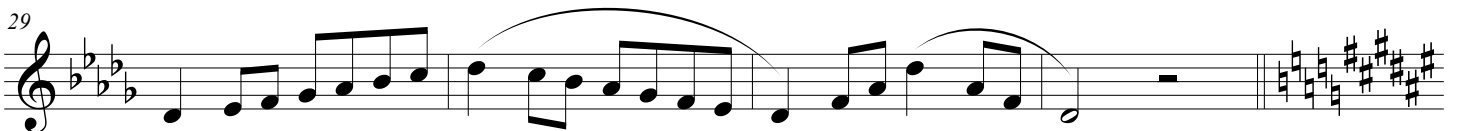
Concert Ab Major (Bb)



Concert Db Major (Eb)



Concert Gb Major (Ab)



Concert Cb/B Major (Db)

33

Concert E Major (F#)

37

Concert A Major (B)

41

Concert D Major (E)

45

Concert G Major (A)

49

Concert d minor (e)

53

Concert a minor (b)

57

Chromatic Scale

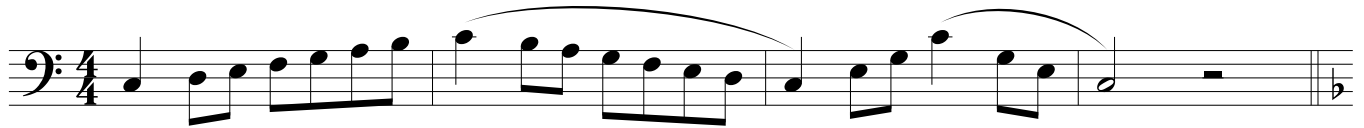
Trombone

Scales and Rudiments

For Memorization

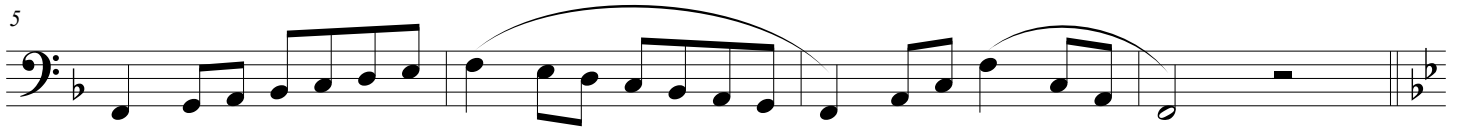
Arr. Zach Dobos

♩ = 100



Concert C Major

5



Concert F Major

9



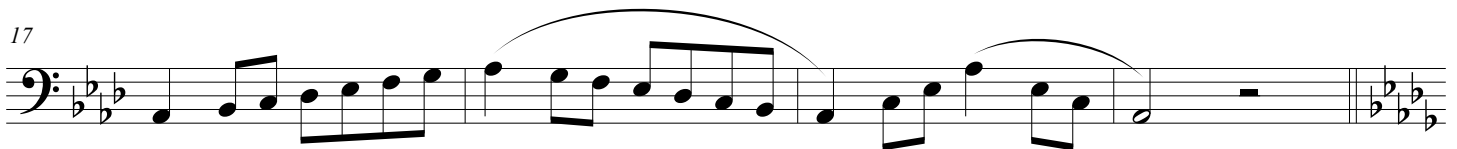
Concert Bb Major

13



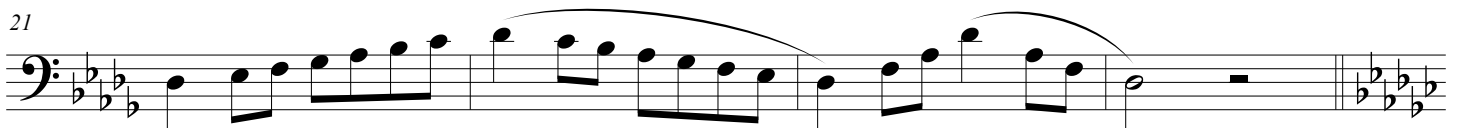
Concert Eb Major

17



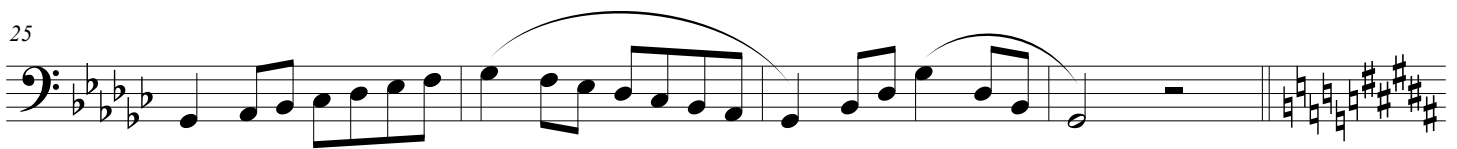
Concert Ab Major

21



Concert Db Major

25



Concert Gb Major

29



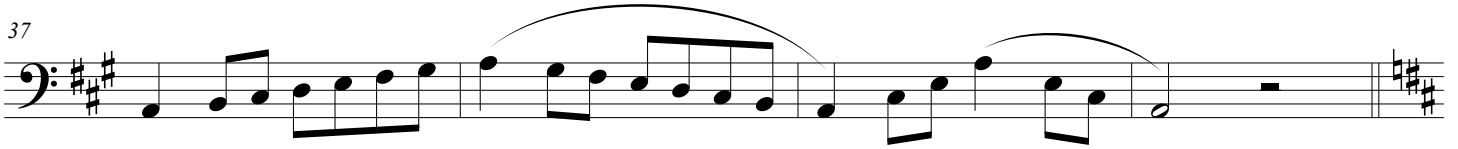
Concert B Major

33



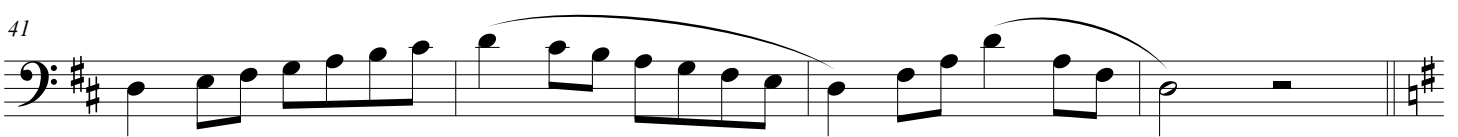
Concert E Major

37



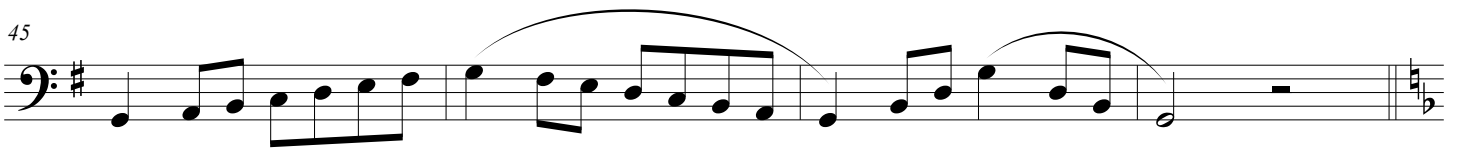
Concert A Major

41



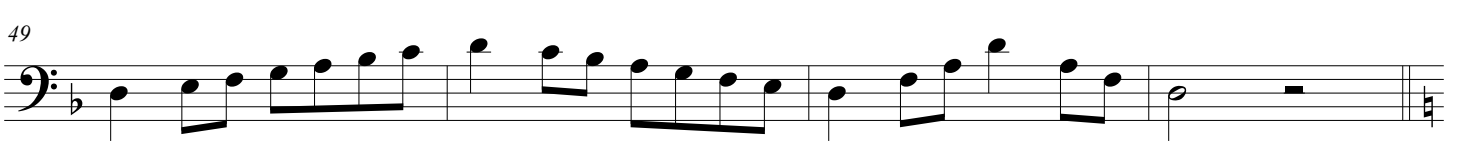
Concert D Major

45



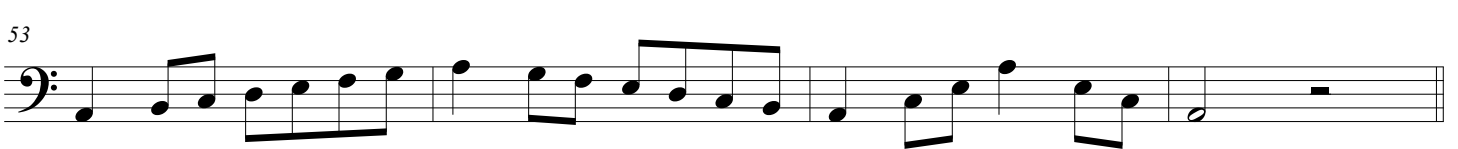
Concert G Major

49



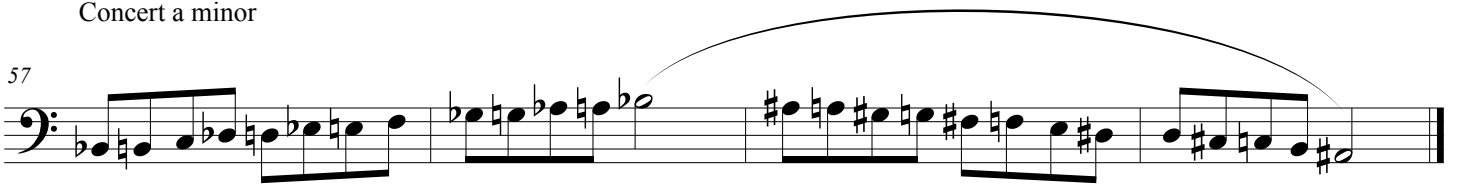
Concert d minor

53



Concert a minor

57



Chromatic Scale

Trumpet in B \flat

Scales and Rudiments

For Memorization

Arr. Zach Dobos

$\text{♩} = 100$

A musical staff in treble clef with a key signature of two sharps (D major) and a 4/4 time signature. The scale is written in eighth notes, starting on D4 and ascending to D5. The notes are: D4, E4, F#4, G4, A4, B4, C5, D5. The scale is repeated twice, with the first two notes of each repetition beamed together. The piece ends with a double bar line and a key signature change to D major.

Concert C Major (D)

5

A musical staff in treble clef with a key signature of one sharp (G major) and a 4/4 time signature. The scale is written in eighth notes, starting on G4 and ascending to G5. The notes are: G4, A4, B4, C5, D5, E5, F5, G5. The scale is repeated twice, with the first two notes of each repetition beamed together. The piece ends with a double bar line and a key signature change to G major.

Concert F Major (G)

9

A musical staff in treble clef with a key signature of two flats (C major) and a 4/4 time signature. The scale is written in eighth notes, starting on C4 and ascending to C5. The notes are: C4, D4, E4, F4, G4, A4, B4, C5. The scale is repeated twice, with the first two notes of each repetition beamed together. The piece ends with a double bar line and a key signature change to C major.

Concert B \flat Major (C)

13

A musical staff in treble clef with a key signature of three flats (F major) and a 4/4 time signature. The scale is written in eighth notes, starting on F4 and ascending to F5. The notes are: F4, G4, A4, B4, C5, D5, E5, F5. The scale is repeated twice, with the first two notes of each repetition beamed together. The piece ends with a double bar line and a key signature change to F major.

Concert E \flat Major (F)

17

A musical staff in treble clef with a key signature of four flats (B \flat major) and a 4/4 time signature. The scale is written in eighth notes, starting on B \flat 4 and ascending to B \flat 5. The notes are: B \flat 4, C5, D5, E5, F5, G5, A5, B \flat 5. The scale is repeated twice, with the first two notes of each repetition beamed together. The piece ends with a double bar line and a key signature change to B \flat major.

Concert A \flat Major (B \flat)

21

A musical staff in treble clef with a key signature of five flats (E \flat major) and a 4/4 time signature. The scale is written in eighth notes, starting on E \flat 4 and ascending to E \flat 5. The notes are: E \flat 4, F4, G4, A4, B4, C5, D5, E \flat 5. The scale is repeated twice, with the first two notes of each repetition beamed together. The piece ends with a double bar line and a key signature change to E \flat major.

Concert D \flat Major (E \flat)

25

A musical staff in treble clef with a key signature of six flats (A \flat major) and a 4/4 time signature. The scale is written in eighth notes, starting on G \flat 4 and ascending to G \flat 5. The notes are: G \flat 4, A \flat 4, B \flat 4, C5, D5, E5, F5, G \flat 5. The scale is repeated twice, with the first two notes of each repetition beamed together. The piece ends with a double bar line and a key signature change to A \flat major.

Concert G \flat Major (A \flat)

29

A musical staff in treble clef with a key signature of seven flats (D \flat major) and a 4/4 time signature. The scale is written in eighth notes, starting on C \flat 4 and ascending to C \flat 5. The notes are: C \flat 4, D \flat 4, E \flat 4, F \flat 4, G \flat 4, A \flat 4, B \flat 4, C \flat 5. The scale is repeated twice, with the first two notes of each repetition beamed together. The piece ends with a double bar line and a key signature change to D \flat major.

Concert C \flat /B Major (D \flat)

33

Concert E Major (F#)

37

Concert A Major (B)

41

Concert D Major (E)

45

Concert G Major (A)

49

Concert d minor (e)

53

Concert a minor (b)

57

Chromatic Scale

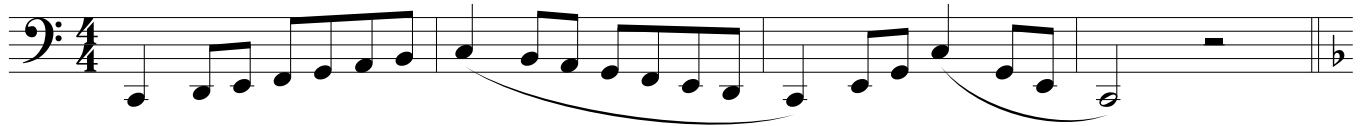
Tuba

Scales and Rudiments

For Memorization

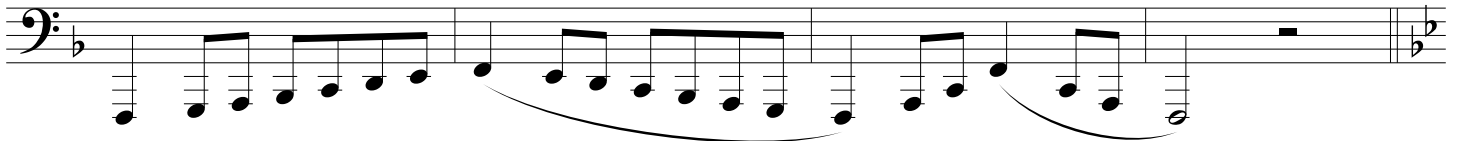
Arr. Zach Dobos

♩ = 100



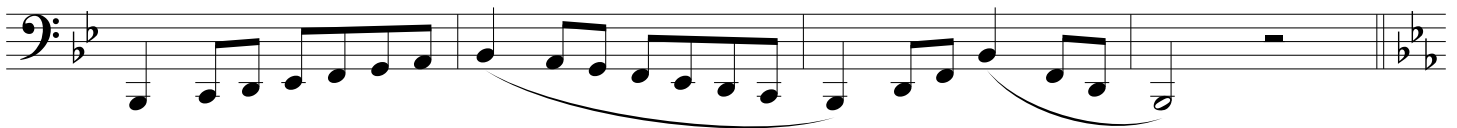
Concert C Major

5



Concert F Major

9



Concert Bb Major

13



Concert Eb Major

17



Concert Ab Major

21



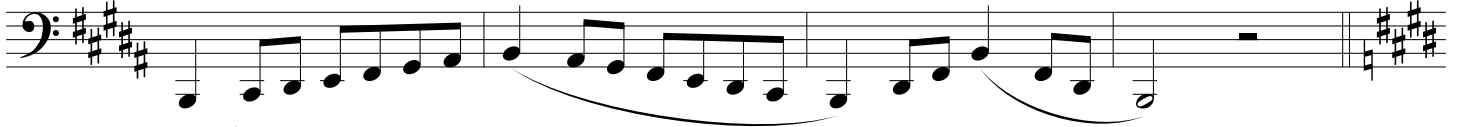
Concert Db Major

25



Concert Gb Major

29



Concert B Major

33

Musical notation for the Concert E Major scale, measures 33-36. The scale is written in bass clef with a key signature of three sharps (F#, C#, G#). The notes are E2, F#, G#, A, B, C#, D, E3, with slurs over the first four and last four notes. The piece ends with a double bar line and a key signature change to E major.

Concert E Major

37

Musical notation for the Concert A Major scale, measures 37-40. The scale is written in bass clef with a key signature of two sharps (F#, C#). The notes are A2, B, C#, D, E, F#, G, A3, with slurs over the first four and last four notes. The piece ends with a double bar line and a key signature change to A major.

Concert A Major

41

Musical notation for the Concert D Major scale, measures 41-44. The scale is written in bass clef with a key signature of two sharps (F#, C#). The notes are D2, E, F#, G, A, B, C, D3, with slurs over the first four and last four notes. The piece ends with a double bar line and a key signature change to D major.

Concert D Major

45

Musical notation for the Concert G Major scale, measures 45-48. The scale is written in bass clef with a key signature of one sharp (F#). The notes are G2, A, B, C, D, E, F#, G3, with slurs over the first four and last four notes. The piece ends with a double bar line and a key signature change to G major.

Concert G Major

49

Musical notation for the Concert d minor scale, measures 49-52. The scale is written in bass clef with a key signature of one flat (Bb). The notes are d2, e, f, g, a, b, c, d3, with slurs over the first four and last four notes. The piece ends with a double bar line and a key signature change to d minor.

Concert d minor

53

Musical notation for the Concert a minor scale, measures 53-56. The scale is written in bass clef with a key signature of no sharps or flats. The notes are a2, b, c, d, e, f, g, a3, with slurs over the first four and last four notes. The piece ends with a double bar line and a key signature change to a minor.

Concert a minor

57

Musical notation for the Chromatic Scale, measures 57-60. The scale is written in bass clef with a key signature of no sharps or flats. The notes are a2, a#2, b, b#2, c, c#2, d, d#2, e, e#2, f, f#2, g, g#2, a3, with slurs over the first four and last four notes. The piece ends with a double bar line.

Chromatic Scale

Scales and Rudiments

For Memorization

Arr. Zach Dobos

♩ = 100

A musical staff in treble clef, 4/4 time signature. It contains the first line of a scale starting on middle C (C4). The notes are C4, D4, E4, F4, G4, A4, B4, C5, B4, A4, G4, F4, E4, D4, C4. The first four notes are beamed together, and the last four notes are also beamed together. There are slurs over the first four notes and the last four notes. The staff ends with a double bar line and a key signature change to one flat.

Concert C Major

5

A musical staff in treble clef, 4/4 time signature. It contains the first line of a scale starting on F4. The notes are F4, G4, A4, Bb4, C5, Bb4, A4, G4, F4. The first four notes are beamed together, and the last four notes are also beamed together. There are slurs over the first four notes and the last four notes. The staff starts with a key signature change to two flats and ends with a double bar line and a key signature change to one flat.

Concert F Major

9

A musical staff in treble clef, 4/4 time signature. It contains the first line of a scale starting on Bb4. The notes are Bb4, C5, D5, Eb5, F5, Eb5, D5, C5, Bb4. The first four notes are beamed together, and the last four notes are also beamed together. There are slurs over the first four notes and the last four notes. The staff starts with a key signature change to three flats and ends with a double bar line and a key signature change to two flats.

Concert Bb Major

13

A musical staff in treble clef, 4/4 time signature. It contains the first line of a scale starting on Eb5. The notes are Eb5, F5, G5, Ab5, Bb5, Ab5, G5, F5, Eb5. The first four notes are beamed together, and the last four notes are also beamed together. There are slurs over the first four notes and the last four notes. The staff starts with a key signature change to four flats and ends with a double bar line and a key signature change to three flats.

Concert Eb Major

17

A musical staff in treble clef, 4/4 time signature. It contains the first line of a scale starting on Ab5. The notes are Ab5, Bb5, C6, Db6, Eb6, Db6, C6, Bb5, Ab5. The first four notes are beamed together, and the last four notes are also beamed together. There are slurs over the first four notes and the last four notes. The staff starts with a key signature change to five flats and ends with a double bar line and a key signature change to four flats.

Concert Ab Major

21

A musical staff in treble clef, 4/4 time signature. It contains the first line of a scale starting on Db6. The notes are Db6, Eb6, F6, Gb6, Ab6, Gb6, F6, Eb6, Db6. The first four notes are beamed together, and the last four notes are also beamed together. There are slurs over the first four notes and the last four notes. The staff starts with a key signature change to six flats and ends with a double bar line and a key signature change to five flats.

Concert Db Major

25

A musical staff in treble clef, 4/4 time signature. It contains the first line of a scale starting on Gb6. The notes are Gb6, Ab6, Bb6, C7, Db7, C7, Bb6, Ab6, Gb6. The first four notes are beamed together, and the last four notes are also beamed together. There are slurs over the first four notes and the last four notes. The staff starts with a key signature change to seven flats and ends with a double bar line and a key signature change to six flats.

Concert Gb Major

29

A musical staff in treble clef, 4/4 time signature. It contains the first line of a scale starting on B6. The notes are B6, C7, D7, Eb7, F7, Eb7, D7, C7, B6. The first four notes are beamed together, and the last four notes are also beamed together. There are slurs over the first four notes and the last four notes. The staff starts with a key signature change to two sharps and ends with a double bar line and a key signature change to one sharp.

Concert B Major

33

Concert E Major

37

Concert A Major

41

Concert D Major

45

Concert G Major

49

Concert d minor

53

Concert a minor

57

Chromatic Scale